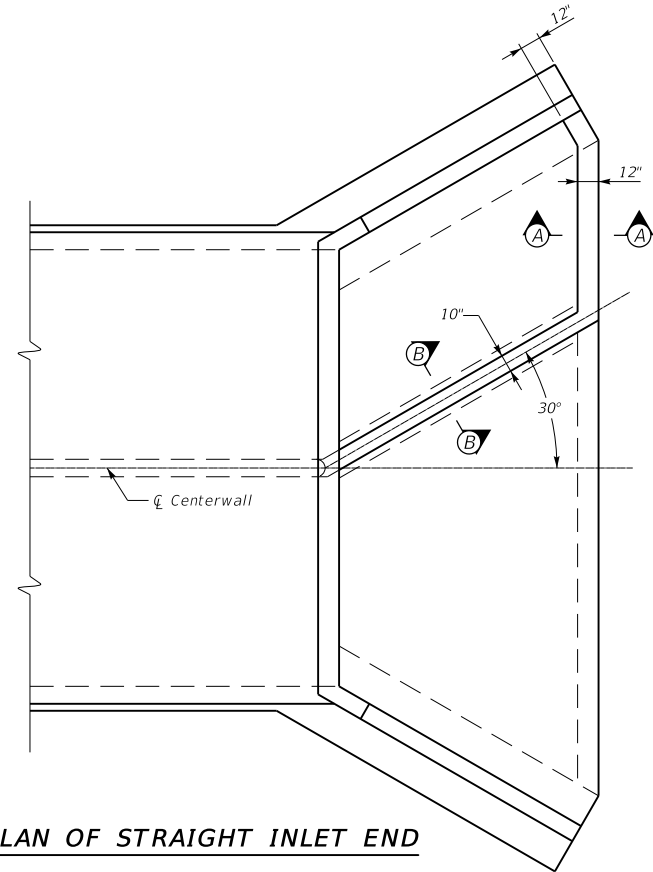
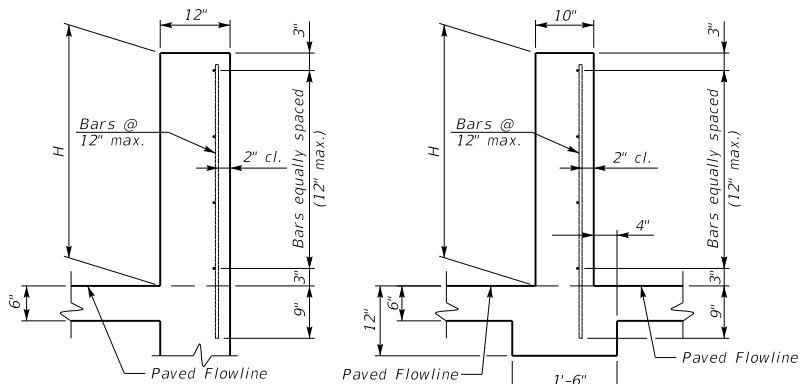


PLAN OF SKEWED INLET END



PLAN OF STRAIGHT INLET END



SECTION A-A

SECTION B-B

General Notes

LOW FLOW DIVERSION CURB: Include all materials and labor required to construct the Low Flow Diversion Curb in the bid for Low Flow Diversion Curb.

DIMENSION "H": This dimension is the lesser of the wing tip elevation, one-half the barrel height opening, or as designated on the plans.

METHOD OF MEASUREMENT: The limits of the Low Flow Diversion Curb is the entire wall that is above the paved flowline, extending from the centerwall to the wing face as detailed on the Plan views, and the 6" x 1'-6" footing as shown in Section B-B.

STEEL REINFORCEMENT: All steel reinforcement is #4 bars in accordance with ASTM A 615, Grade 60.

CONCRETE: Class "A" Concrete is to be used.

KENTUCKY
DEPARTMENT OF HIGHWAYS
LOW FLOW
DIVERSION
CURB

STANDARD DRAWING NO. BGX-016-01
SUBMITTED BY *Bob Adams* DATE 02-26-20
DIRECTOR DIVISION OF STRUCTURAL DESIGN
APPROVED BY *[Signature]* DATE 02-26-20
STATE HIGHWAY ENGINEER